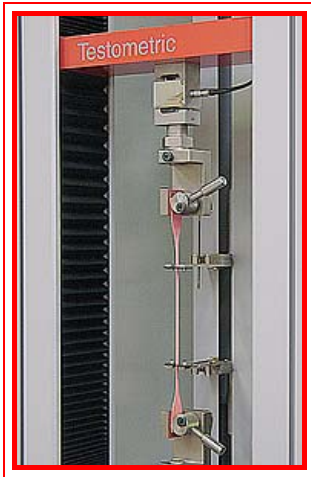




Testometric™

M350-5  Universal Tester



Machine Features

- Console-free design is cost effective without compromising testing ability.
- The **CX** is fully automated using a standard PC and dedicated winTest software.
- PC stored test methods that set up and control the tester and provide user-defined calculations.
- Widest available certified load range per load cell – down to 1/1000th of load cell. Exceeds all International standards for accuracy.
- Tension, compression, shear, cycling and maintain load test facilities.
- Automatic identification of load cells.
- Tee Slots in column for accessory mounting.
- High accuracy closed-loop speed control with jog facility, selectable range up to 1,000,000:1.
- Absolute, relative and auxiliary positional control.
- Wide range of contacting and non-contacting extensometers.
- Grips and fixtures for tension, compression, flexure, shear and product testing.

Machine Capacity	5kN
Crosshead Travel Excluding Grips	1100mm
Throat	295mm
Overall Height	1590mm
Overall Width	545mm
Overall Depth	510mm
Speed Range	0-1000mm/min
Weight	110kg
Power	0.45kW

Load Frame

Rigid frame, using dual slide crosshead guidance system and rigid extruded support column.
 Frame stiffness 10kN/mm plus K factor facility built-in. Re-circulating ball screw with bellows.
 Electronic limit trips, total travel trips and customer programmable safety stops. Rubber mat front protection.

Force Measurement (via software)

Universally Calibrated, better than Grade 0.5 EN 7500-1, DIN 51221 ASTM E-4. AFNOR A03-501. Range 0.4% to 100% minimum. Available cells 20, 50, 100, 250, 500, 1000, 2500N, 5000N.

Automatic identification of load cell. Resolution 1 part in 500000 with autoranging. Electronic load cell protection.

Extension Measurement (via software)

Full frame length to 0.001mm. Resolution 0.001 min. Accuracy 0.01min. Absolute, relative and auxiliary modes mm, min and percent. Programmable extension limits.

Speed Control (via software)

4 Quadrant precision DC servo motor with closed loop control. Drive system temperature and current protection. Positional jog speed 0.001mm/min to maximum. Speed setting increments 0.001mm/min.

Software

winTest Analysis™ universal testing software is a multi-functional and fully customisable software package that supports industry standards including ISO, ASTM and BS EN specifications.

Test specifications supported include tensile, compression, flexural, peel, tear, burst, adhesion, shear, cyclic and hardness. Additional flexibility is provided by user-defined multistage testing for highly specialised testing requirements. **winTest Reports™** is an enhancement to winTest Analysis to add flexibility to data analysis and statistical reporting. The package provides a report generation capability that can include long-term statistics and control charts for all specified calculations. **winTest Reports™** can also be configured to display headings, titles, company logos, graphs, charts, pop-up menus and specific technical information.

Accessories

Range of contacting and non-contacting extensometer and displacement transducers with auto-recognition. Calipers, thickness gauges and balances with direct input of measurement into test program with averaging of multiple inputs. IBM/Compatible Desktop or Notebook PC Task Lighting
 Sample cutting press and dies
 Extensive range of grips and fixtures

Power

110/125/220/240V 40/60Hz

Options

In addition to standard fixtures we can test your specimens in our applications laboratory and design special grips and fixtures for custom applications.

CE Marking

Conforms to all relevant European standards with UKAS certification.



The Testometric Co. Ltd

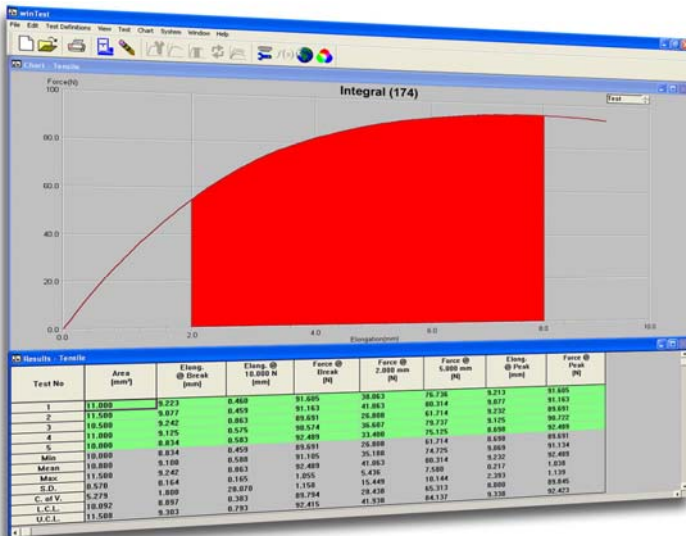
Materials Testing Machines

Unit 1 Lincoln Business Park, Lincoln Close, Rochdale, Lancs, England, OL11 1NR
 Telephone: 44 (0)1706 654039 Facsimile: 44 (0)1706 646089
 e-mail: info@testometric.co.uk website: www.testometric.co.uk



Overview

winTest Analysis universal testing software is a multi-functional and fully customisable software package that supports all industry standards including ISO, ASTM and BS EN specifications. Test specifications supported include tensile, compression, flexural, peel, tear, burst, adhesion, shear, cyclic and hardness. Additional flexibility is provided by user-defined multistage step testing for highly specialised testing requirements.

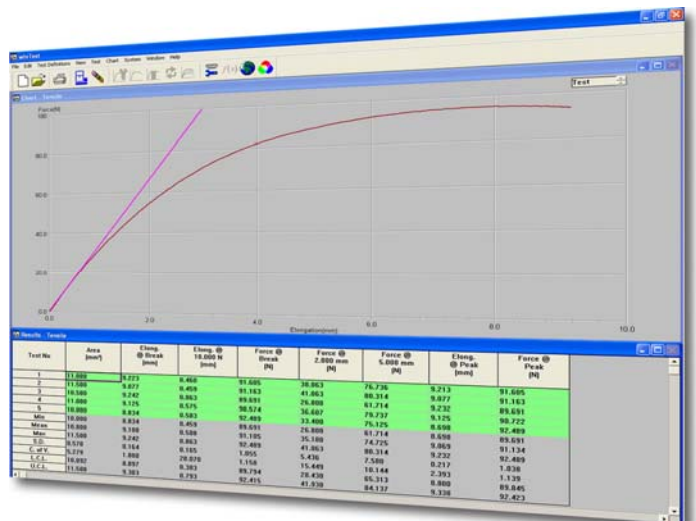


Test

- Multiple result/graphs test sheets.
- Graphs with zoom facility.
- Real-time graphs.
- Test results using industry standard calculations.
- Gradients or critical sections of graphs with movable marker.

Create

- User defined machine control routines.
- Customised test calculations
- Auto scaling graphical displays.
- Comprehensive print outs
- Interface with peripheral equipment.
- Graphs with configurable axes, best fit, colours, grid lines etc.



Key Features

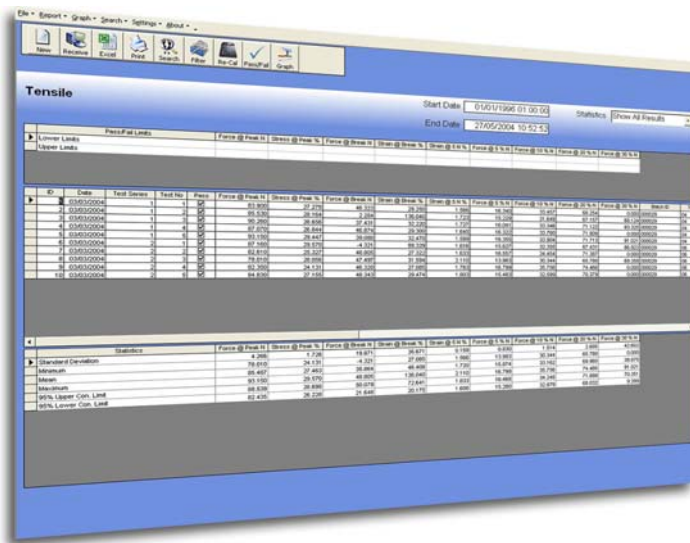
Runs under Window NT, XP, 2000, 98 operating systems.
 Configure the tester setup via the PC interface.
 Call up a stored database of industry/test specific calculations.
 Fully supports peripherals - balance/scales, extensometer, thickness gauges and calipers.
 Multi-lingual support with one key press.



Analyse your data

Copy your results into Microsoft Word to produce your own presentation-quality test reports.
 Output your data in CSV format for importing into spreadsheets including Microsoft Excel and standard 'off-the-shelf' SPC packages and Laboratory Manager software.
 Convert your results into Microsoft Access database format.
 Additional modules are also available that will filter test data to produce long term statistical data that can be used for creating SPC charts for detailed trend analysis.
 Include Pass/Fail criteria with highlight facility.
 Integrated SPC functions include:-

- Standard Deviation
- Co-efficient of Variance
- Confidence limits
- Range
- Mean
- Capability Index (Cp) and (Cpk).
- Charts



Hardware requirements

Minimum System

Windows 98 Second Edition
 500Mhz Processor
 64 MB RAM
 250 MB hard disk space. This is only to install the software, the program also requires hard disk space to store data, this should also be taken into consideration.
 Both computer and monitor must be capable of displaying a resolution of 800 x 600
 CDROM drive for installation
 1 x Free serial port. At least one serial port will be required for connection of a tester. If other devices are to be connected, extra serial ports may be required.



Testometric Co. Ltd.
 materials testing machines