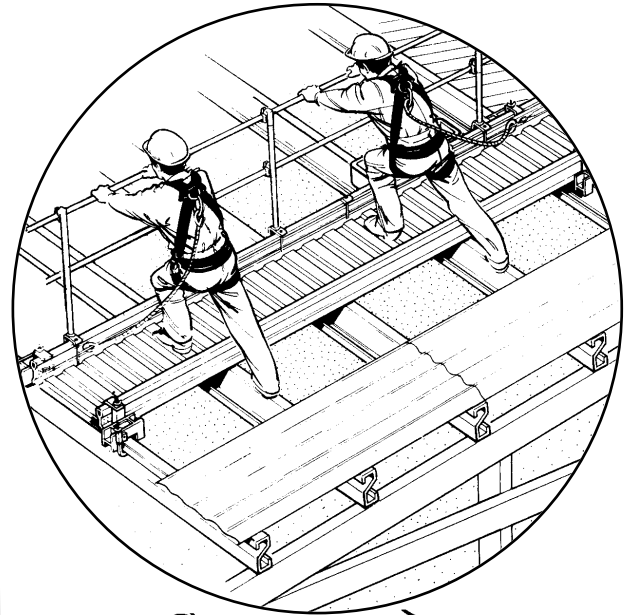


## RECOMMENDED PROCEDURE FOR INSTALLATION OF SPANDECK ROOFING TROLLEY & GUARDRAILS

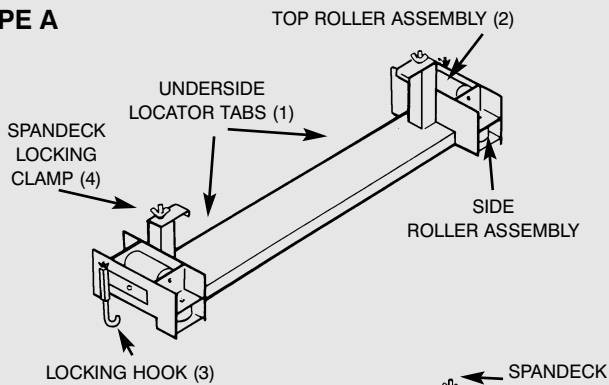
Spandeck roofing trolleys have been designed to suit different types of applications. It is important to check that the units supplied are suitable for the use and situation for which they are intended.

Each Spandeck to be supported by two trolleys as near to the end of the Spandeck as possible.

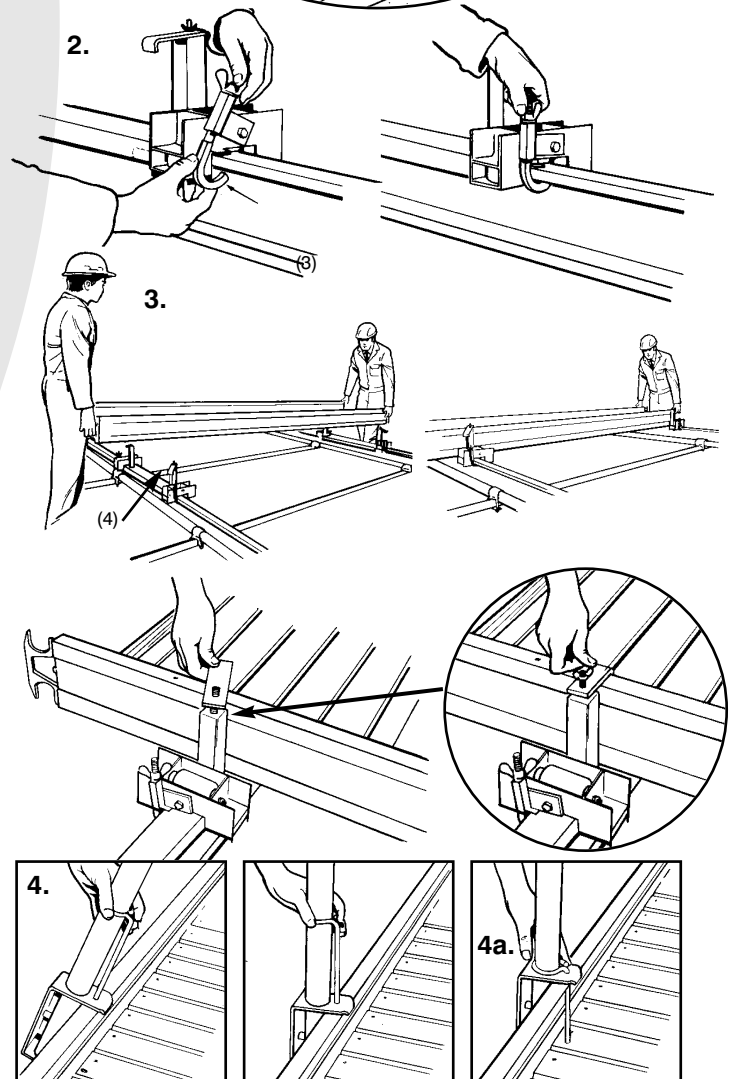
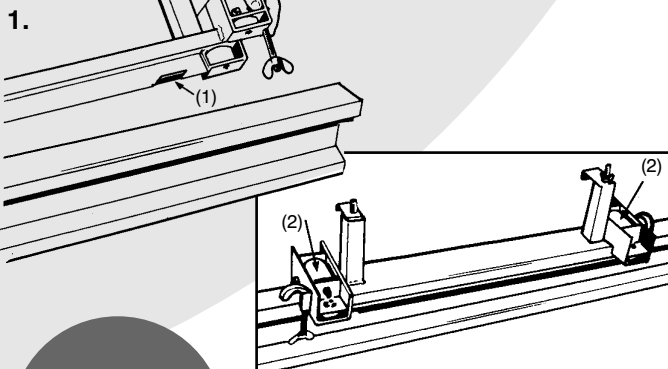
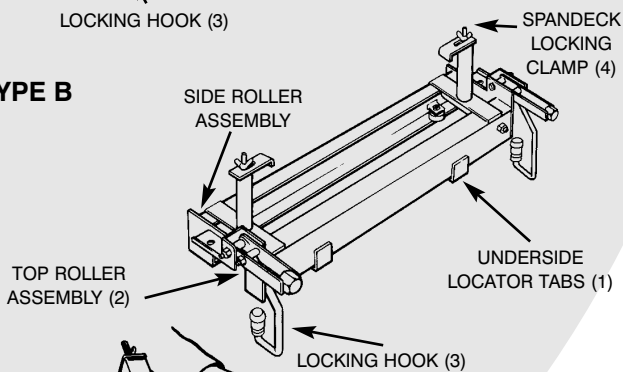
1. Holding the roofing trolley at an angle of 30 degrees, allow the locator tabs (1), to fit beneath the upper lip of the purlin. Once in position, lower the assembly to allow the top roller assembly (2) to rest on the top face of the purlin.
2. Swing down the locking hooks (3) so that they grip the underside of the top of the purlin, and tighten them to prevent movement of the roof roller assembly or apply brake if type B.
3. Position Spandecks between the locking clamps (4) with the toeboard sides uppermost, and secure. Attach lanyard to horizontal safety line if fitted.
4. Fit Spandeck guardrail posts as handrails as illustrated. Horizontal guardrails must be fitted on the inside of the guardrail post.
- 4a. Ensure securing pin is fully engaged.

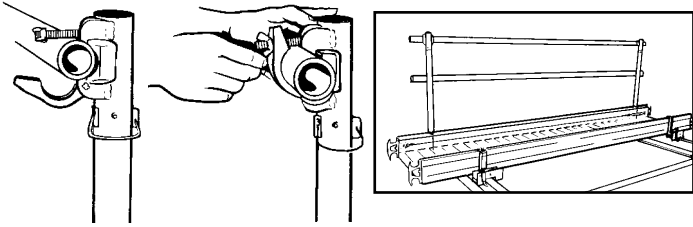


### TYPE A



### TYPE B





5. To move the Spandek roofing trolley to the next location, slacken the locking hooks (3) whilst standing on the Spandek staging.

Then with one foot on the staging and both hands holding handrail tube, push assembly along the purlins using other foot. If trailing edge system is fitted remove brakes and pushed assembly to the desired location.

Where possible, it is advisable for two operatives to push the assembly, one at each end of the Spandek run. In the case of multiple lengths of Spandek, three operatives with one pushing in the centre is recommended.

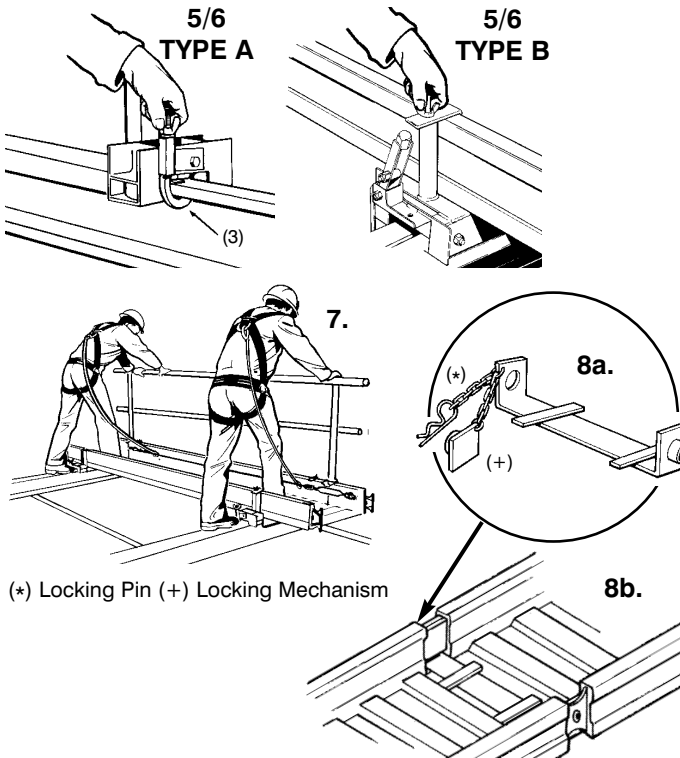
6. Re-tighten locking hooks or apply brakes when desired location is reached.

7. The use of a safety harness is recommended at all times. The lanyard of the harness should be attached to the horizontal safety line in the base of the Spandek if fitted.

### MULTIPLE LENGTHS

8a. When joining Spandek staging to create a run, only use a Spandek Link Bracket. Remove pin (\*) from link brackets and remove locking mechanism (+). Insert link bracket between Spandeks and re-insert locking mechanism and pin.

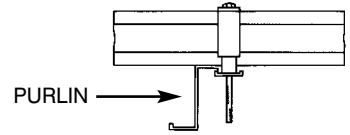
8b. Where a Spandek link bracket is fitted, the roof roller should be fitted as near as possible to the joint.



(\*) Locking Pin (+) Locking Mechanism

### USE OF SPANDECK WITH PURLIN ANCHORS

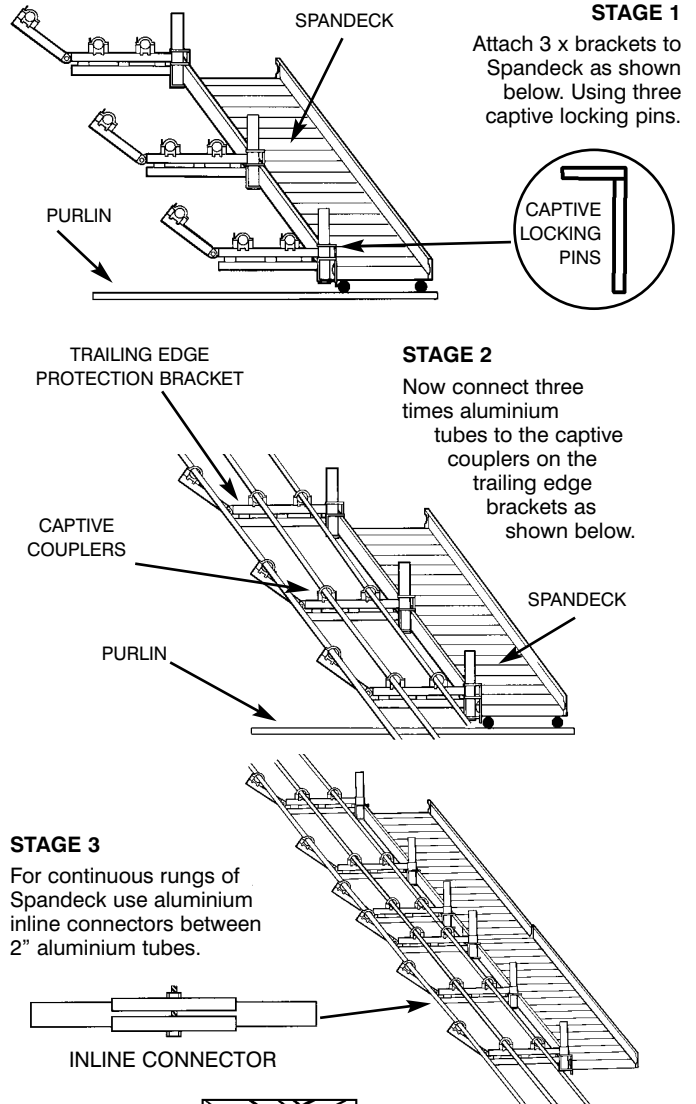
Four purlin anchors per Spandek to be used as near to the end of Spandek as possible.



### TRAILING EDGE PROTECTION

IF TRAILING EDGE PROTECTION IS USED OBSERVE THE FOLLOWING.

Note: Do not use Spandek for roof work without roofing trolleys or purlin anchors. Guardrails removed from illustration for clarity.



### GENERAL SAFETY RULES

Various designs of roofing trolley exist. It is important to check that the units to be used are suitable for the use and situation for which they are intended. Prior to use the operator must satisfy himself that the working platform complies with all statutory regulations.

Spandek stagings have S.W.L. of 800lbs (360kg) distributed. If used for work - safety harnesses must be used, maximum safe working load of Spandek is 2 people. It is important to ensure that the structure of the roof can support this applied load, otherwise a lower load capacity should be specified.

Personnel involved with the erection and dismantling should do so in accordance with the Spandek roofing trolley instruction manual.

The use of a safety harness is recommended at all times. The lanyard of the harness should be attached to the horizontal safety line in the base of the Spandek, if fitted.

Provision must be made with regard to safety of others, as is recommended practice with overhead working, e.g. coned off areas below roof works with signs stating men working overhead.

HORIZONTAL SAFETY LINE IS TESTED TO BS EN 364:1993

