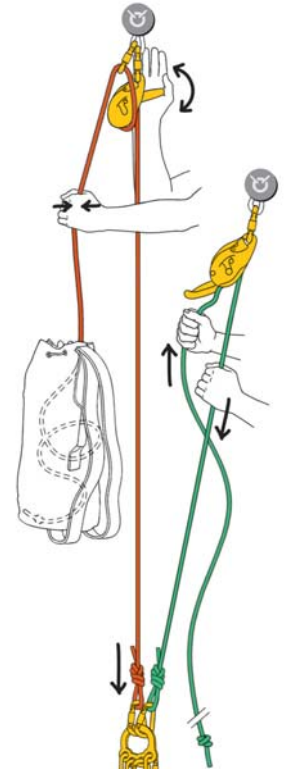
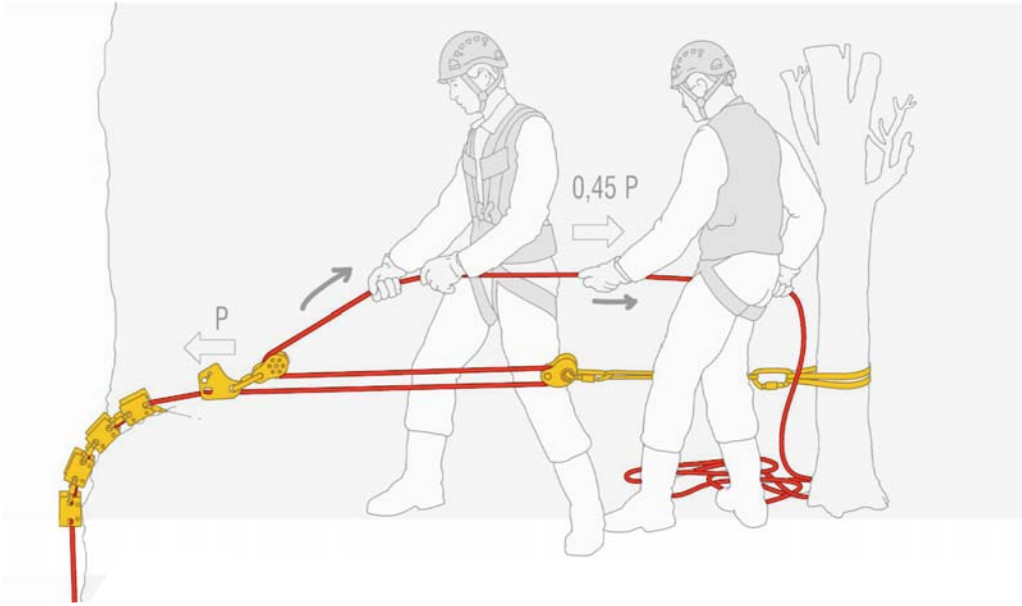




WORK SOLUTIONS



Photo: John Evans



Lowering Line Kit

-  VERTEX BEST x 1
-  PITAGOR x 1
-  BEAL 11MM INDUSTRY ROPE (50m) x 1
-  ANNEAU SLINGS x 2
-  RESCUE PULLEY x 1
-  I'D x 1
-  Am'D TRIACT x 4

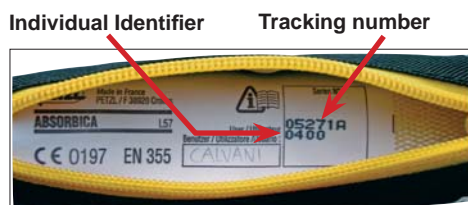
Rescue Pack

-  VERTEX BEST x 6
-  NEWTON FAST JAK x 4
-  NAVAHO BOD FAST x 1
-  PITAGOR x 1
-  BEAL 11mm INDUSTRY ROPE (50m) x 2
-  ANNEAU x 10
-  RESCUE PULLEY x 4
-  I'D x 2
-  ASCENSION x 1
-  OMNI TRIACT x 4
-  Am'D TRIACT x 10

PRODUCT MARKING & TRACKING

Since 1992, all Petzl personal protective equipment has a tracking number. This tracking number consists of five digits and one letter. The first two digits indicate the year of manufacture, the following three digits indicate the production day (1 – 366), and the letter represents the person whom performed the final inspection.

Most textile products and helmets also have an additional individual identifier. This system enables the customer to track a product through its inspection process. This is a safety measure for customers and reduces the need for additional marking after issue.



VERTEX BEST

NEW VERSION



Vertex Best A16 Y1

Designed specifically for work at height and rescue

- Features new fully adjustable cradle and high strength chinstrap for comfort and security
- Custom moulded shell with side slots for mounting face shield and/or hearing protection
- Integral headlamp clips
- Available in – Yellow A16 Y1

Black A16 N1

CE marked - Weight 465g
EN 397 / EN 12492 Hybrid

VERTEX VENT

NEW VERSION



Vertex Vent A11 R1

Ventilated helmet for work at height and rescue

- Features adjustable ventilation which can be closed with internal sliding shutters
- Fully adjustable cradle and high strength chinstrap for comfort and security
- Custom moulded shell with side slots for mounting face shield and/or hearing protection
- Integral headlamp clips
- Available in - Red A11 R1

White A11 W1
Black A11 N1
Orange A11 O1

CE marked - Weight 465g
EN12492

NEWTON FAST JAK



Newton Fast C73 2FJ

Rapid intervention fall arrest harness

- Quick fitting due to JAK vest and FAST buckles
- Easily adjusted with the DoubleBack buckles
- Dorsal and sternal attachments
- Additional attachments for 'LIFT' spreader
- In use with Fire Services across the UK
- Available in size 2 only
- EN361

CE marked – Weight 1140g – Colour black / yellow

NEWTON FAST



Newton Fast C73 F

Fall arrest harness

- Quick release 'FAST' buckles on leg loops for ease of fitting
- Dorsal and sternal attachments
- Additional attachments for 'LIFT' spreader
- Can be fitted with a range of accessories
- Available in size 0, 1 and 2
- EN 361

CE marked – Weight 690 to 870g – Colour black / yellow

NAVAHO BOD FAST

NEW



Navaho Bod Fast C710F0

Full body fall arrest and work positioning harness

- 2 fall arrest points
- 2 lateral attachment points
- 1 ventral attachment point
- Quick release 'FAST' buckles on leg loops for ease of fitting
- Available in 2 sizes
- EN 358, EN 813, EN 361

CE marked – Weight 1805g – Colour black / yellow

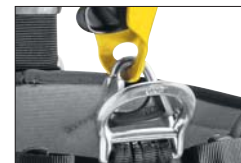
The Navaho range of harnesses has been improved for 2007 - features now include;



Foam-padded shoulder straps for reduced friction and additional comfort



Dorsal attachment point adjustment for quick and easy positioning



Anti-rotational connector a bar on the shoulder strap / waist belt connector helps prevent rotation



Improved waist belt support thermo-moulded support at the lumbar region for excellent comfort when suspended



Rear buckle on harness enables a restraint lanyard to be attached



Redesigned gear loops 3 gear loops for attaching karabiners

GRILLON & FLAT HOOK



Grillon L52-2H

Compact adjustable lanyard

- For work restraint and work positioning
- Fitted protection sleeve
- Flat hook connector
- EN 358

CE marked – Weight 420g

DOUBLE ABSORBICA Y & MGO'S



Absorbica-Y-MGO L59MGO

Tape Y-Lanyard with energy absorber and 2 MGO connectors

- Large opening auto-locking connectors
- 80cm arm length, 104cm total length
- EN 355 and EN 362

CE marked – Weight 1120g

DOUBLE ABSORBICA Y & MGO'S



Absorbica-Y150-MGO L70150YM

Rope Y-Lanyard with energy absorber and 2 MGO connectors

- Large opening Auto-locking connectors
- Length 150cm not including connectors
- EN 355 and EN 362

CE marked – Weight 1120g

ANNEAU SLING



Anneau C40

Stitched polyamide webbing sling

- Available in 60, 80, 120 cm lengths
- 22kN breaking load
- EN 566 and EN 795B

CE marked – Weight 58 to 98g

CONNEXION VARIO



Connexion Vario C42V

Adjustable anchor strap

- Length adjusts from 80 to 130cm
- 22kN breaking load
- EN 795B and EN354

CE marked – Weight 475g

BEAL INDUSTRY 11mm LOW STRETCH



Beal 'Industry' low stretch rope

- 11 mm diameter
- 3000kg breaking load
- EN 1891 type A
- Available in 50, 100, 200 and 400m lengths
- Available in white, red, blue, yellow (main colour)

CE marked – Weight 73g/m

BEAL HOTLINE 11mm LOW STRETCH



Beal 'Hotline' aramide inner sheath low stretch rope

- Allows access to areas with raised temperatures
- Resistant to certain chemicals
- 11mm diameter
- 2880kg breaking load
- EN 1891 type A
- Available in 195m reels
- Available in white (main colour)

CE marked – Weight 79g/m

WILLIAM LOCK



William Lock M36 SL

Screwgate closure with colour indicator

- Pear shape with wide opening
- Keylock system
- 25kN breaking load (main axis-closed gate)
- EN 362 and EN 12275 type B/H

CE marked – Weight 90g

Am'D TRIACT



Am'D Triact M34 TL

Triact 3 action auto-closure gate

- Keylock system
- 28kN breaking load (main axis-closed gate)
- EN 362 and EN 12275 type K/B

CE marked – Weight 75g

WILLIAM TRIACT



William Triact M36 TL

Triact 3 action auto-closure gate

- Pear shape with wide opening
- Keylock system
- 25kN breaking load (main axis-closed gate)
- EN 362 and EN 12275 type B/H

CE marked – Weight 90g

OMNI TRIACT



Omni Triact M37 TL

Fall arrest harness closure karabiner

- Used to close harnesses having two attachment points that must be joined with a connector
- 20kN breaking load (main axis – closed gate)
- Keylock system
- EN 362 and EN 12275 type B

CE marked – Weight 92g

Am'D LOCK



Am'D Lock M34 SL

Screwgate closure with colour indicator

- Keylock system
- 28kN breaking load (main axis-closed gate)
- EN 362 and EN 12275 type B/K

CE marked – Weight 75g

ID



ID D20S

Self-braking descender and belay device

- Locks if handle released or if pulled too hard
 - Anti-error catch safeguards against incorrect threading
 - Hard-lock function
 - Can be used to belay leader or second
 - May be used as a progress capture device in a haul system
 - For ropes 10 – 11.5mm diameter
 - EN 341 type A, EN 12841 type C*, NFPA L
- CE marked – Weight 530g

ASAP



ASAP B71

Mobile fall arrester

- Arrests a fall or a slide on an inclined surface
 - Locks when descent rate too great
 - Functions on vertical or angled ropes
 - Moves up or down the rope without manual intervention
 - Locks even if grabbed in panic
 - EN 353-2, EN 12841 type A*
 - Can be used alone or with approved energy absorbing lanyard for remote mounting
- CE marked – Weight 427g – rope not supplied

ASCENSION



Ascension B17

Handled ascender

- Inclined teeth and self-cleaning slots for grip on wet, icy or muddy ropes
 - Left and right handed models
 - For ropes of 8 to 13mm diameter
 - EN 567, EN 12841 type B*, NFPA L
- CE marked – Weight 196g – Colour blue, black or gold

CROLL



Croll B16

Chest mounted ascender

- Special shape for mounting against the body
 - Rectangular upper hole for support strap
 - For ropes of 8 to 13mm diameter
 - EN 567, EN 12841 type B*
- CE marked – Weight 130g – Colour gold

RESCUCENDER



Rescucender B50

Mobile rope clamp

- Profiled cam
- Removable spindle for installation anywhere
- Locking pin; creates a very secure attachment to the rope
- For single ropes 9 to 13mm diameter
- EN567

CE marked – Weight 250g

PRO TRAXION



Pro-Traxion P51

Self jamming pulley

- 38mm ball raced sheave
- Swing sideplate for easy rope fitting
- Chrome plated steel cam
- 22kN breaking Load (pulley)
- For ropes 8 to 13mm diameter
- EN 567, EN 12278

CE marked – Weight 265g

RESCUE



Rescue P50

Swing side pulley

- Sealed ball races
- Hole accepts three karabiners
- For rope of less than 13mm diameter
- 32kN breaking load
- EN 12278, NFPA L

CE marked – Weight 186g

TWIN



Twin P65

Highly efficient double Prusik pulley

- 51mm diameter aluminium sheath for excellent efficiency
- Sealed ball races
- Up to 3 karabiners can be attached
- EN12278 NFPA G

CE Marked – Weight 580g

PAW S



Paw P63 S

Anchor plate - Small

- For easy organisation of the work area and creating multiple anchor systems
- Made of aluminium – excellent strength to weight ratio
- 36kN breaking load

CE, NFPA G – Weight 55g

PAW M



Paw P63 M

Anchor plate - Medium

- 36kN breaking load

CE, NFPA G – Weight 210g

LYON ROPE SACK

Rope Bag

LSB20RES

- 18ltr (50m) Rope bag with 2 straps
 - Overall height 51cm
- Weight 606g

LSB30RES

- 30ltr (100m) Rope bag with 2 straps
 - Overall height 58cm
- Weight 826g



LYON RESCUE BAG



Rescue Bag LSB35

First response rescue bag

- Flat bag containing 2 LSB20 bags
- Equipment compartments
- Buckle closure

Weight 1.9kg



NAVAHO SIT FAST

NEW



Navaho Sit Fast C790F0

Sit harness for work positioning

- 2 lateral attachment points
- 1 ventral attachment point
- Quick release 'FAST' buckles on leg loops for ease of fitting
- Can be converted to a fall arrest harness with the TOP chest harness, or rope access harness with the TOP CROLL
- Available in three sizes
- EN 358, EN 813

CE marked

Weight 1190 – 1300g

Colour black / yellow or black

TOP CROLL

NEW



TOP CROLL C81C00

Chest harness transforms sit harness into a harness for rope access

- Integrated CROLL ventral rope clamp for ascending ropes
- Single sternal attachment point
- Connects to rear buckle of NAVAHO SIT or SIT FAST harness
- Available in two sizes
- With SIT harness; EN 361, EN12841 type B

CE marked - Weight 645 – 695g

Colour black / yellow

TOP

NEW



TOP C81000

Chest harness transforms sit harness into a fall arrest harness

- Single sternal attachment point
- No dorsal attachment so allows you to carry a backpack without interference
- Connects to rear buckle of NAVAHO SIT or SIT FAST harness
- Available in two sizes
- With SIT harness; EN 361

CE marked - Weight 585 – 635g

Colour black / yellow

DUO ATEX

NEW



Duo Atex E61L5 3UK

Intrinsically safe, rechargeable unit, 2 light source headtorch

Ex II 2GD, EEx ia IIC T3 ExiaD21T 200°C

- For use in Zone 1(gas) and Zone 21 (dust)
- Includes rechargeable 2.7mAh battery and universal charger
- Waterproof down to -5metres
- "Intrinsic" & "Augmented" safety
- 5 LEDs for proximity lighting: 22metres for 13 hrs + 18hrs backup
- Long range lighting of 70metres
- CE EN50014, EN50020

CE marked – Weight 380g (including batteries)

TIKKA ATEX XP



Tikka Atex XP E81 PEX

Intrinsically Safe, pocket size (95g) headtorch

Ex II 3G, EEx nL IIB T4

- For use in Zone 2 (sporadic presence of gas)
- Penetrating beam or wide proximity light
- 3 Lighting levels; high/medium/economy
- Boost mode; 50% more light for 20 seconds
- Economic mode for up to 120 hours duration
- Up to 35metres beam (>> 50m in "Boost")
- Battery level indicator
- Uses standard AAA batteries
- CE EN50014, EN50021

CE marked – Weight 95g (including batteries)

e+LITE

NEW



e+LITE E02P

Intrinsically Safe, emergency headlamp

Ex II 3GD, EEx ic IIC T6, Ex tD A22 IP6x T85 °C

- Total dependability – can be stored with batteries for 10 years in all conditions
- 2 Lighting levels; economic & maximum
- 2 strobe modes: white and red light
- Up to 19metres beam
- Operates on 2 lithium CR2032 batteries (included)

CE marked – Weight 46g (incl. batteries & case)

NEST



Nest S61

Stretcher for confined space rescue

- Casualty can be transported horizontally, vertically or at an angle
- Includes full body harness to secure victim
- Foam padding provides comfort

Weight 11.5kg

PITAGOR



Pitagor C80 BR

Triangular rescue harness

- Rapid 'one size' fitting
- Shoulder straps
- EN 1497, EN 1498

CE marked – Weight 1290g - Colour red

All products in this brochure are distributed in the UK and Ireland by Lyon Equipment Ltd

For technical information about any of these products or for training in their use, please contact us using the details below:

Lyon Equipment Limited
Junction 38, M6
Tebay
Cumbria
CA10 3SS

T. +44 (0) 15396 25903

F. +44 (0) 15396 24857

E-mail work.rescue@lyon.co.uk
www.lyon.co.uk

LYON
WORK & RESCUE